



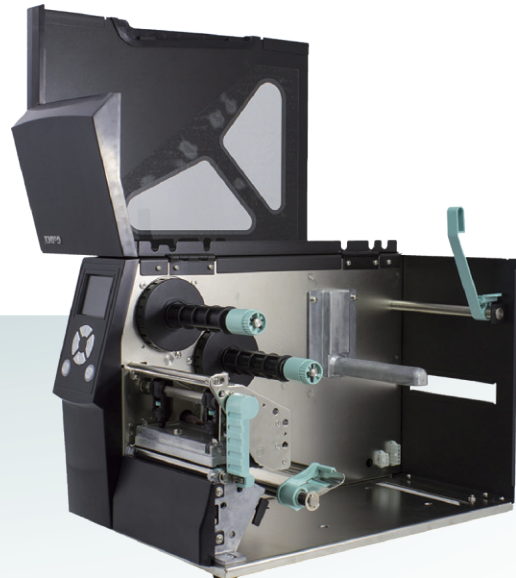
ZX400/400i series

The best combination of Compact and Robust Design

Innovating upon extensive customer feedbacks, GoDEX 's most cost-effective and space-saving Industrial printers, the ZX400/ZX400i series, integrates industrial utility with its high performance and exquisite design. The ZX400/ZX400i series not only remains its classic design, but also provides features with



Options



- Multiple connectivity
- Auto Calibration button included
- A full line of accessories
- Easy ribbon/ media loading
- Full-range adjustable label sensor

- 32-bit CPU that offers fast "first label out" throughput
- Fast print speed - up to 6 ips
- Upgrade version for 2.4" Color TFT LCD and operation panel for easy and intuitive operation

ZX400/400i series

Thermal Transfer Light Industrial Printer

| Model Name | ZX420 | ZX420i | ZX430 | ZX430i |
|-----------------------------------|---|---|---|---|
| Print Method | Thermal Transfer / Direct Thermal | | | |
| Resolution | 203 dpi (8 dots/mm) | | 300 dpi (12 dot/mm) | |
| Print Speed | 6 ips (152 mm/s) | | 4 ips (102 mm/s) | |
| Print Width | 4.25" (108mm) | | 4.16" (105.7mm) | |
| Print Length | Min. 0.16" (4 mm)**; Max. 157.44" (3999mm) | | Min. 0.16" (4 mm)**; Max. 73.19" (1859 mm) | |
| Processor | 32-bit RISC CPU | | | |
| Memory | 128 MB Flash (60 MB for user storage) | | | |
| Flash SDRAM | 32 MB | | | |
| Sensor Type | Adjustable reflective sensor and transmissive sensor, left aligned | | | |
| Type | Continuous form, gap labels, black mark sensing, and punched hole; label length set by auto sensing or programming | | | |
| Width | Tear : Min. 1" (25.4 mm) – Max. 4.64" (118 mm) Cutter : Max. 4.61" (117 mm) | | | |
| Media Thickness | Dispenser / Rewind : Max. 4.64" (118 mm) Min. 0.003" (0.076 mm) – Max. 0.01" (0.25 mm) | | | |
| Label roll diameter | Max. 8" (203.2 mm) with 3" (76.2 mm) core | | | |
| Core diameter | Max. 6" (152.4 mm) with 1.5" (38.1 mm) core Max. 5" (127 mm) with 1" (25.4 mm) core Min. 1" (25.4 mm) – Max. 3" (76.2 mm) | | | |
| Ribbon Types | Wax, wax/resin, resin | | | |
| Ribbon Length | Max. 1476' (450 m) | | | |
| Ribbon Width | Min. 1.18" (30 mm) – Max. 4.33" (110 mm) | | | |
| Ribbon roll diameter | 3" (76.2 mm) | | | |
| Ribbon Core diameter | 1" (25.4 mm) | | | |
| Printer Language | EZPL, GEPL, GZPL auto switch | | | |
| Software Label design software | GoLabel (for EZPL only) | | | |
| Driver | Windows 2000, XP, Vista, Windows 7, 8.1 and 10, Windows Server 2003 & 2008, MAC, Linux | | | |
| DLL | Win CE, .NET, Android, Windows Mobile, Windows 2000 / XP / VISTA / 7 / 8.1 / 10 | | | |
| Resident Fonts Bitmap Fonts | Bitmap fonts 90°, 180°, 270° rotatable, single characters 90°, 180°, 270° rotatable | | | |
| TTF Fonts | Bitmap fonts 8 times expandable in horizontal and vertical directions TTF Fonts (Bold / Italic / Underline). 0°, 90°, 180°, 270° rotatable | | | |
| Download Fonts Bitmap Fonts | 90°, 180°, 270° rotatable, single characters 90°, 180°, 270° rotatable | | | |
| Asian Fonts | 16x16, 24x24. Traditional Chinese (BIG-5), Simplified Chinese (GB2312), Japanese (S-JIS), Korean (KS-X1001) | | | |
| TTF Fonts | 90°, 180°, 270° rotatable and 8 times expandable in horizontal and vertical directions TTF Fonts (Bold / Italic / Underline). 0°, 90°, 180°, 270° rotatable | | | |
| 1-D Bar Codes | China Postal Code, Codabar, Code 11, Code 32, Code 39, Code 93, Code 128 (subset A, B, C), EAN-8, EAN-13, EAN 8/13 (with 2 & 5 digits extension), EAN 128, FIM, German Post Code, GS1 DataBar, HIBC, Industrial 2 of 5, Interleaved 2-of-5 (1 of 5), Interleaved 2-of-5 with Shipping Bearer Bars, ISBT – 128, ITF 14, Japanese Postnet, Logmars, MSI, Postnet, Plessey, Planet 11 & 13 digit, RPS 128, Random Weight, Standard 2 of 5, Telepen, UPC-A, UPC-E, UPC-A and UPC-E with EAN 2 or 5 digit extension, UCC 128, UCC/EAN-128 K-Mart | | | |
| 2-D Bar Codes | Aztec code, Code 49, Codablock F, Datamatrix code, MaxiCode, Micro PDF417, Micro QR code, PDF417, QR code, TLC 39 | | | |
| Code Pages | Codepage 437, 737, 850, 851, 852, 855, 857, 860, 861, 862, 863, 865, 866, 869, Windows 1250, 1251, 1252, 1253, 1254, 1255, 1257 Unicode UTF8, UTF16BE, UTF16LE | | | |
| Graphics | Resident graphic file types are BMP and PCX, other graphic formats are downloadable from the software | | | |
| Interfaces | <ul style="list-style-type: none"> USB 2.0 (B-Type) | <ul style="list-style-type: none"> USB 2.0 (B-Type) Serial port: RS-232 (DB-9) IEEE 802.3 10/100 Base-Tx Ethernet port (RJ-45) USB Host (A-Type) | <ul style="list-style-type: none"> USB 2.0 (B-Type) | <ul style="list-style-type: none"> USB 2.0 (B-Type) Serial port: RS-232 (DB-9) IEEE 802.3 10/100 Base-Tx Ethernet port (RJ-45) USB Host (A-Type) |
| Control Panel | <ul style="list-style-type: none"> 1 Power on/standby button with green color LED backlight 1 Calibration button at rear panel 1 Control key : FEED / PAUSE / CANCEL with dual color LED backlight: Ready (Green); Error (Red) | <ul style="list-style-type: none"> Color TFT LCD with navigation button 1 Power on/standby button with green color LED backlight 1 Calibration button at rear panel 1 Control key : FEED / PAUSE / CANCEL with dual color LED backlight: Ready (Green); Error (Red) | <ul style="list-style-type: none"> 1 Power on/standby button with green color LED backlight 1 Calibration button at rear panel 1 Control key : FEED / PAUSE / CANCEL with dual color LED backlight: Ready (Green); Error (Red) | <ul style="list-style-type: none"> Color TFT LCD with navigation button 1 Power on/standby button with green color LED backlight 1 Calibration button at rear panel 1 Control key : FEED / PAUSE / CANCEL with dual color LED backlight: Ready (Green); Error (Red) |
| RTC | Standard | | | |
| Power | Auto Switching 100-240V AC, 50-60Hz | | | |
| Environment Operation temperature | 41°F to 104°F (5°C to 40°C) | | | |
| Storage temperature | -4°F to 140°F (-20°C to 60°C) | | | |
| Humidity Operation | 20-85%, non-condensing | | | |
| Storage | 10-90%, non-condensing | | | |
| Agency Approvals | CE (EMC) · FCC Class B · CB · UL · cUL · CCC | | | |
| Dimension Length | 15.86" (403 mm) | | | |
| Height | 10.79" (274 mm) | | | |
| Width | 10.24" (260 mm) | | | |
| Weight | 23.81lbs (10.8 Kg), excluding consumables | | | |
| Options | Cutter (Dealer Install) Parallel port adaptor module (Centronic female 36-pin)(Dealer Install) Bluetooth (Dealer Installer) Wireless LAN (IEEE 802.11 b/g/n) (Dealer Install) External label rewinder Label Dispenser (Dealer Install) | | | |

* Specifications are subject to change without notice. All company and/or product names are trademarks and/or registered trademarks of their respective owners.

** Minimum print height and maximum print speed specification compliance can be dependent on non-standard material variables such as label type, thickness, spacing, liner construction, etc. GoDEX is pleased to test non-standard materials for minimum print height, and maximum print speed capability.

Applications

Applications for Labels & Barcodes

ZX400/400i series is as versatile as for most applications.



Retail

Receipt, Ingredient label, Price tag, Content label, Registration receipt, Postal slip, etc.

Warehouses, Logistic & Transportation

Stack label, Product label, Postal slip
Storage management, Dispatch label, Packaging label, Delivery receipt, etc.

Manufacturing

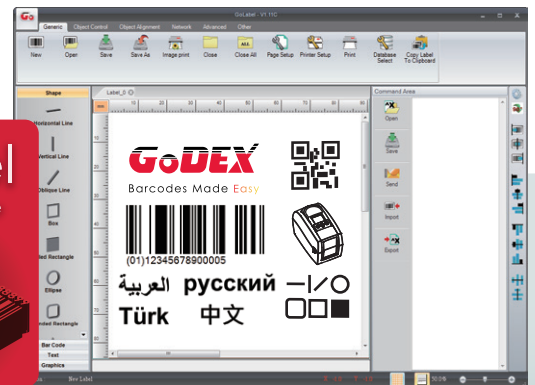
Product label, Content label, Packaging label, Administrative slip, In & Out record slip, etc.

GoDEX LABEL DESIGN SOFTWARE

GoLabel Software / User Friendly

GoLabel is based on a WYSIWYG (what you see is what you get) user interface, makes everything so easy for you to create and print barcode labels. GoLabel is the first-choice label design software that you can't miss it!

Go visit www.godexintl.com and download GoLabel to experience it!



GoDEX RIBBONS

High quality GoDEX thermal transfer ribbons.

GoDEX offers premium thermal transfer ribbons that will fit most of your printing applications.

- Wax
- Wax/ Resin
- Resin
- Near Edge

