



8" Industrial Barcode Printer

# HD830i



## Brand new wide format Thermal Printer

After years of innovation, the **HD830i** is GoDEX's newest and most versatile industrial printer that has ever been launched by GoDEX. The **HD830i**'s capabilities brings tremendous flexibility for integration into various applications. Retail, manufacturing, warehousing, logistics, government and office applications are all recommended solutions where the **HD830i** can be used.



External Label Stand :10" Max.  
(Standard Package included)

- Dual-Colored status LEDs with a calibration button and intuitive touchscreen display
- Robust metal casing and solid print mechanism to take on heavy duty jobs
- Optional Wifi connectivity. The Printer includes extra memory to facilitate integration in multiple applications. (32 MB SDRAM · 128 MB Flash)



# HD830i Specifications

Model Name		HD830i
<b>Print Method</b>		Thermal Transfer / Direct Thermal
<b>Resolution</b>		300 dpi (12 dot/mm)
<b>Print Speed</b>		4 ips (102 mm/s)
<b>Print Width</b>		8.64" (219.5mm)
<b>Print Length</b>		Min. 1" (25.4 mm)** ; Max . 40" ( 1,016 mm)
<b>Processor</b>		32-bit RISC CPU
<b>Memory</b>	<b>Flash SDRAM</b>	128 MB Flash (60 MB for user storage) 32 MB
<b>Sensor Type</b>		Adjustable reflective sensor and transmissive sensor, central aligned
<b>Media</b>	<b>Type</b>	Continuous form, gap labels, black mark sensing, and punched hole; label length set by auto sensing or programming
	<b>Width</b>	Tear : Min. 4" (108 mm) – Max. 10" (255 mm) Cutter : Max. 8.5" (215.9 mm)
	<b>Thickness</b>	Min. 0.002" (0.06 mm) – Max. 0.01" (0.25 mm)
	<b>Media Capacity</b>	Media OD up to 10" Max.
<b>Ribbon</b>	<b>Types</b>	Wax, wax/resin, resin
	<b>Length</b>	Max.981' (300 m)
	<b>Width</b>	Min. 4.3" (110 mm) – Max. 8.66" (220 mm)
	<b>Ribbon roll diameter</b>	2.67" (68 mm) Max.
<b>Printer Language</b>		1" (25.4 mm) EZPL, GEPL, GZPL auto switch
<b>Software</b>	<b>Label design software</b>	GoLabel (for EZPL only)
	<b>Driver</b>	Windows 2000, XP, Vista, Windows 7, 8.1 and 10 , Windows Server 2003 , 2008 & 2010 MAC · Linux
	<b>DLL</b>	Win CE, .NET, Andriod, Windows Mobile, Windows 2000 / XP / VISTA / Windows 7 / Windows 8.1/Windows 10
<b>Resident Fonts</b>	<b>Bitmap Fonts</b>	6, 8, 10, 12, 14, 18, 24, 30, 16X26 and OCR A & B Bitmap fonts 90°, 180°, 270° rotatable, single characters 90°, 180°, 270° rotatable
	<b>TTF Fonts</b>	Bitmap fonts 8 times expandable in horizontal and vertical directions TTF Fonts (Bold / Italic / Underline ). 0°,90°, 180°, 270° rotatable
<b>Download Fonts</b>	<b>Bitmap Fonts</b>	90°, 180°, 270° rotatable, single characters 90°, 180°, 270° rotatable 16x16, 24x24. Traditional Chinese (BIG-5), Simplified Chinese (GB2312), Japanese (S-JIS), Korean (KS-X1001)
	<b>Asian Fonts</b>	90°, 180°, 270° rotatable and 8 times expandable in horizontal and vertical directions TTF Fonts (Bold / Italic / Underline ). 0°,90°, 180°, 270° rotatable
<b>Barcodes</b>	<b>1-D Bar Codes</b>	China Postal Code, Codabar, Code 11, Code 32, Code 39, Code 93, Code 128 (subset A, B, C), EAN-8, EAN-13, EAN 8/13 (with 2 & 5 digits extension), EAN 128, FIM, German Post Code, GS1 DataBar, HIBC, Industrial 2 of 5 , Interleaved 2-of-5 (12 of 5), Interleaved 2- of 5 with Shipping Bearer Bars, ISBT – 128, ITF 14, Japanese Postnet, Logmars, MSI, Postnet, Plessey, Planet 11 & 13 digit, RPS 128, Random Weight, Standard 2 of 5, Telepen, UPC-A, UPC-E, UPC-A and UPC-E with EAN 2 or 5 digit extension, UCC 128, UCC/EAN-128 K-Mart
	<b>2-D Bar Codes</b>	Aztec code, Code 49, Codablock F , Datamatrix code, MaxiCode, Micro PDF417, Micro QR code, PDF417, QR code, TLC 39 Codepage 437, 737, 850, 851, 852, 855, 857, 860, 861, 862, 863, 865, 866, 869, Windows 1250, 1251, 1252, 1253, 1254, 1255, 1257 Unicode UTF8 · UTF16BE · UTF16LE
<b>Code Pages</b>	Resident graphic file types are BMP and PCX, other graphic formats are downloadable from the software	
<b>Graphics</b>	<ul style="list-style-type: none"> <li>• USB 2.0 (B-Type)</li> <li>• Serial port: RS-232 (DB-9)</li> <li>• IEEE 802.3 10/100 Base-Tx Ethernet port (RJ-45)</li> <li>• USB Host (A-Type)</li> <li>• Backlight 3.2" touch screen LCD</li> <li>• 1 Power on/standby button with dual colour LED backlight</li> <li>• 1 FEED / PAUSE / CANCEL button with dual colour LED : Ready (Green); Error (Red)</li> <li>• 1 Calibration button at rear panel</li> </ul>	
<b>Interfaces</b>		
<b>Control Panel</b>		
<b>RTC</b>	Standard	
<b>Power</b>	Auto Switching 100-240V AC, 50-60Hz	
<b>Environment</b>	<b>Operation Storage</b>	41°F to 104°F (5°C to 40°C), 20-85%, non-condensing -4°F to 140°F (-20°C to 60°C), 10-90%, non-condensing
<b>Agency Approvals</b>		CE (EMC) · FCC Class B · CB · UL · cUL · CCC
<b>Dimension</b>	<b>Length x Width x Height</b>	221 mm x 431 mm x 224 mm
	<b>Weight</b>	11.7 Kg, excluding consumables Cutter (Dealer Install) Parallel port adaptor module (Centronic female 36-pin)(Dealer Install) Bluetooth (Dealer Installer) Wireless LAN (IEEE 802.11 b/g/n) (Dealer Install)
<b>Options</b>		

\* Specifications are subject to change without notice. All company and/or product names are trademarks and/or registered trademarks of their respective owners.

\*\* Minimum print height and maximum print speed specification compliance can be dependent on non-standard material variables such as label type, thickness, spacing, liner construction, etc. GoDEX is pleased to test non-standard materials for minimum print height, and maximum print speed capability.

# Applications

## Applications for Labels & Barcodes

**HD830i** as versatile as for most applications.



### Logistics

shipping label, package tracing, package label, package receipt etc.

### Warehouse

shelf label, product label, stocking management, exterior/pallet labeling etc.

### Manufacturing

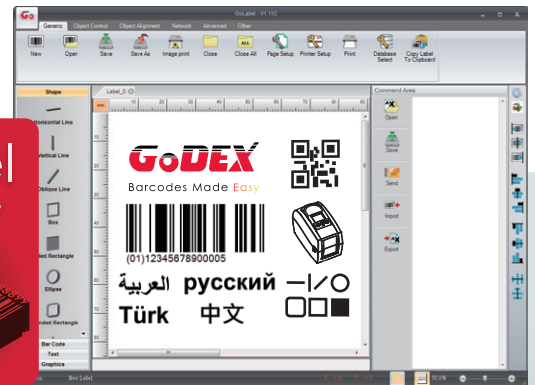
product label, manufacturing label, exterior/pallet label, trade, stocking and document management etc.

## GoDEX LABEL DESIGN SOFTWARE

GoLabel Software / User Friendly

GoLabel is based on a WYSIWYG (what you see is what you get) user interface, makes everything so easy for you to create and print barcode labels. GoLabel is the first-choice label design software that you can't miss it!

Go visit [www.godexintl.com](http://www.godexintl.com) and download GoLabel to experience it!

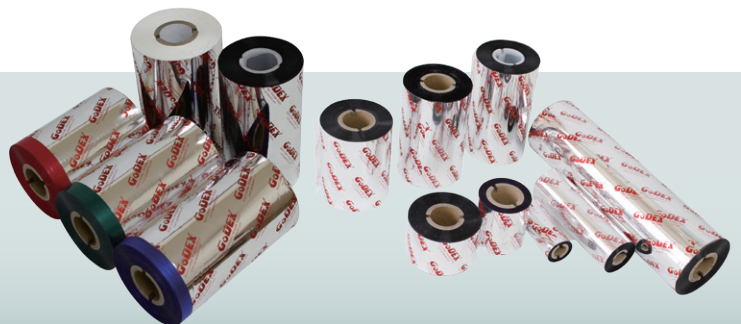


## GoDEX RIBBONS

High quality GoDEX thermal transfer ribbons.

GoDEX offers premium thermal transfer ribbons that will fit most of your printing applications.

- Wax
- Wax/ Resin
- Resin
- Near Edge



**Martek Industries Ltd**  
12B Ridings Park Industrial Estate  
Cannock - WS11 7FJ

Tel: 01543 502202  
[godex.co.uk](http://godex.co.uk)  
[sales@godex.co.uk](mailto:sales@godex.co.uk)